

## HYDROKINETIC TURBINE



### MegaWattBlue® Technology

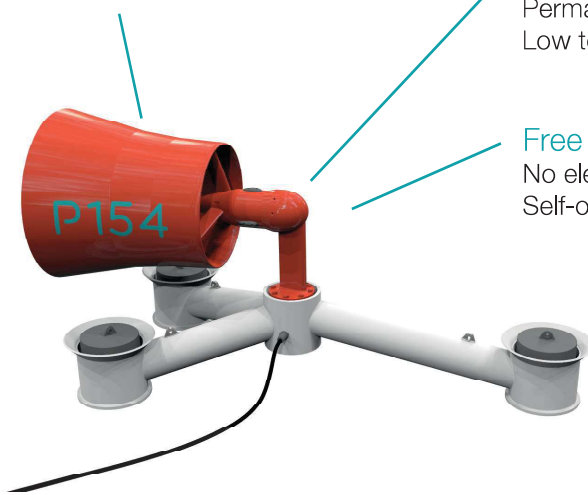
Design validated by French authorities - recover twice more energy than other turbines

### 20 kW Generator

Permanent magnet -  
Low torque ripple

### Free slewing

No electrical yaw system  
Self-orientated due to duct design



Gravity based foundation

# P154 - 20 KW



The turbine P154 is made for river, canals and offshore applications. The device can be put on gravity based, fix under bridge or potoon or set under floating barge.

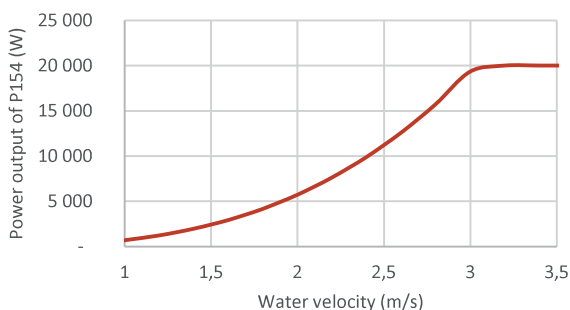
Minimal requirements :

**3,5** m Water depth

**1,5** m/s mean current speed

Hydrokinetic energy can be recovered by current turbines. This free energy resources is fully predictable. Combined with solar into an hybrid electricity generation system, it can provide a continuous base load able to increase peak energy supply, downsize storage and increase battery lifetime.

OUTPUT GENERATOR POWER CURVE

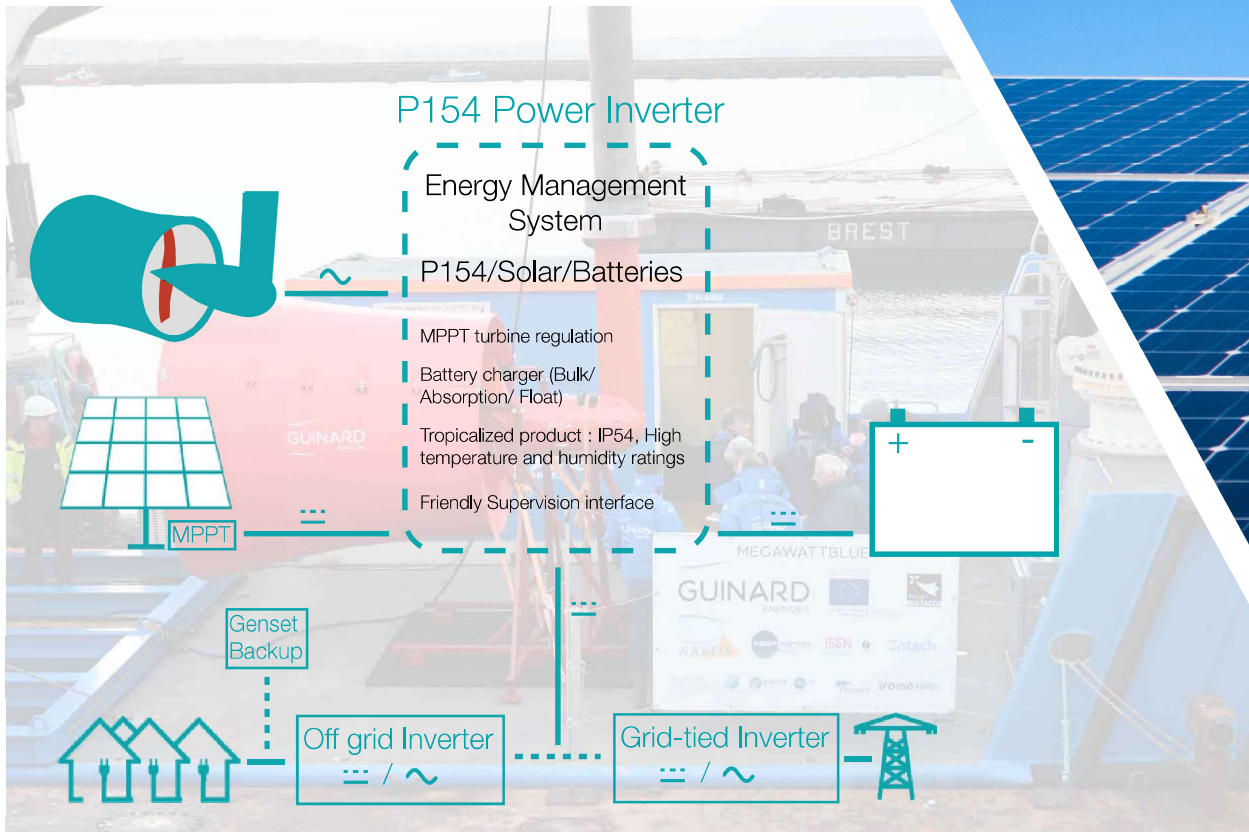


P154 GENERAL DATA

Nominal Power	20,000 W (27.2 hp) at 3 m/s
Minimal water depth	3.5 m (11.5 ft)
Current speed range	1 - 3.5 m/s (1.94 - 6.8 knts)
Dimensions	3000x2300x2300 mm (9.8x7.4x7.4 ft)
Weight	950 kg (2,000 lbs)
Frame material	Aluminium (5000 series)
Flood protection	Emergency electrical brake
Power conversion	Ask for P154 Technical details

## HYBRID POWER SOLUTION

# P154 - 20 KW

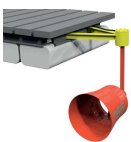


P154 @2,5 m/s current speed + 10 kWp PV : Up to **330 kWh** daily **120,000 kWh** yearly

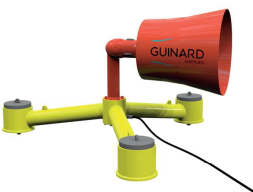
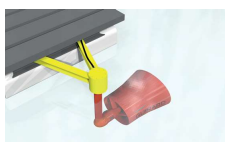
- [www.guinard-energies.bzh](http://www.guinard-energies.bzh)
- @GuinardEnergies
- +33 (0)9 84 45 71 87
- [contact@guinard-energies.bzh](mailto:contact@guinard-energies.bzh)

Headquarter France  
 34 Quai de la douane  
 29200 BREST  
 N° SIREN : 504 625 278  
 CAPITAL : 5 208 400 €

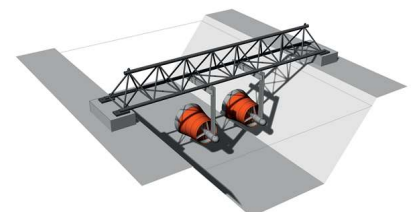
## 💡 Installation solutions



Under a **pontoon / bridge**



On a **gravity base**



Over a **canal**